

Biotinylated Human Claudin 6 Protein-VLP

Cat. No. CLD-HM006B

Description

Source	Recombinant Biotinylated Full length Human Claudin 6 Protein-VLP is expressed from HEK293. It contains Met1-Val220.
Accession	P56747
Molecular Weight	The target protein has a predicted MW of 24.5 kDa.
Endotoxin	Less than 1EU per μg by the LAL method.
Purity	> 95% as determined by HPLC

Formulation and Storage

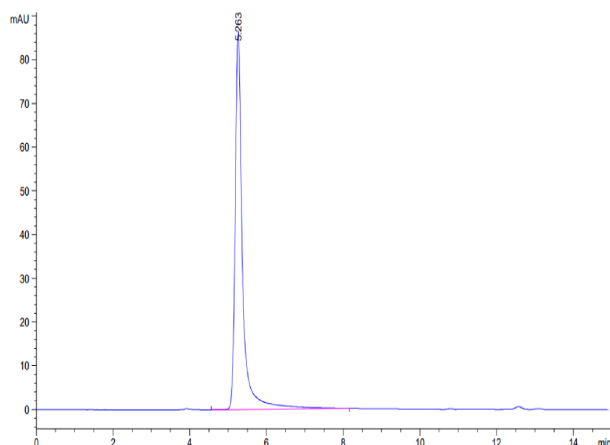
Formulation	Supplied as 0.22 μm filtered solution in PBS, 300mM L-arginine (pH 7.4).
Storage	Valid for 6 months from date of receipt when stored at -80°C . Recommend to aliquot the protein into smaller quantities for optimal storage. Please minimize freeze-thaw cycles.

Background

Claudin-6 is a multipass transmembrane protein in the Claudin family. Claudin-6 is expressed by epithelial cells where it participates in tissue development and the maintenance of tight junction integrity. Human Claudin-6 shares 88% and 86% amino acid sequence identity with mouse and rat Claudin-6, respectively.

Assay Data

SEC-HPLC

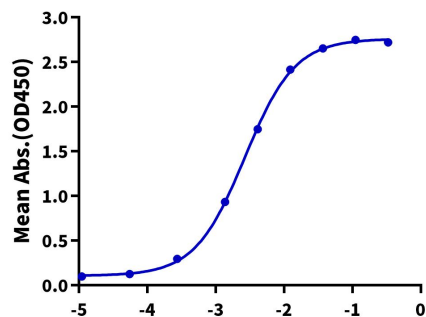


The purity of Biotinylated Human Claudin 6 VLP is greater than 95% as determined by SEC-HPLC.

ELISA Data

Biotinylated Human Claudin 6 VLP ELISA

0.5 μg Biotinylated Human Claudin 6 VLP Per Well

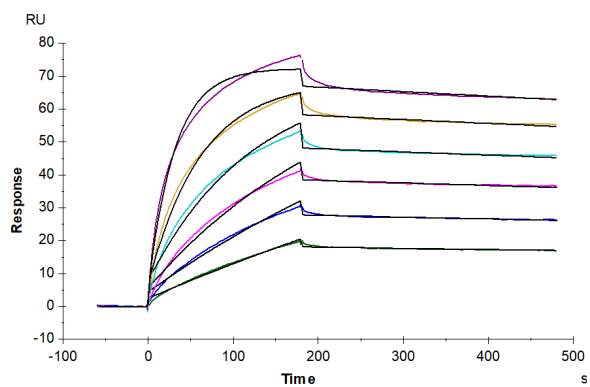


Immobilized Biotinylated Human Claudin 6 VLP at 5 $\mu\text{g}/\text{ml}$ (100 $\mu\text{l}/\text{well}$) on the streptavidin precoated plate (5 $\mu\text{g}/\text{ml}$). Dose response curve for Anti-Claudin6 Antibody, mFc Tag with the EC50 of 6.5ng/ml determined by ELISA (QC Test).

Log Anti-Claudin6 Antibody, mFc Tag Conc. ($\mu\text{g}/\text{ml}$)

Assay Data

SPR Data



Biotinylated Human Claudin 6 VLP captured on CM5 Chip via streptavidin can bind Anti-Claudin 6 Antibody with an affinity constant of 0.16 nM as determined in SPR assay (Biacore T200).